

# Aura Cocoon® - Two Pax

## Optimal Performance

1.99ATA

### **Automated Air-Break™ Technology**

Adjustable Pressure Settings by 0.1,

Tailored Mode Settings

Dual All-In-One Touch Screen Panel

Silent Relief Valves <60 decibels

Water-Cool Air-Conditioner for  
rapid cooling as compared to Air-Cool

## Quality

Made of Carbon Steel - **3X Stronger than Aluminium Alloy to withstand constant pressure for a prolonged period of time**

Automated Pressure Release Feature

High Resistance Plexiglass Door

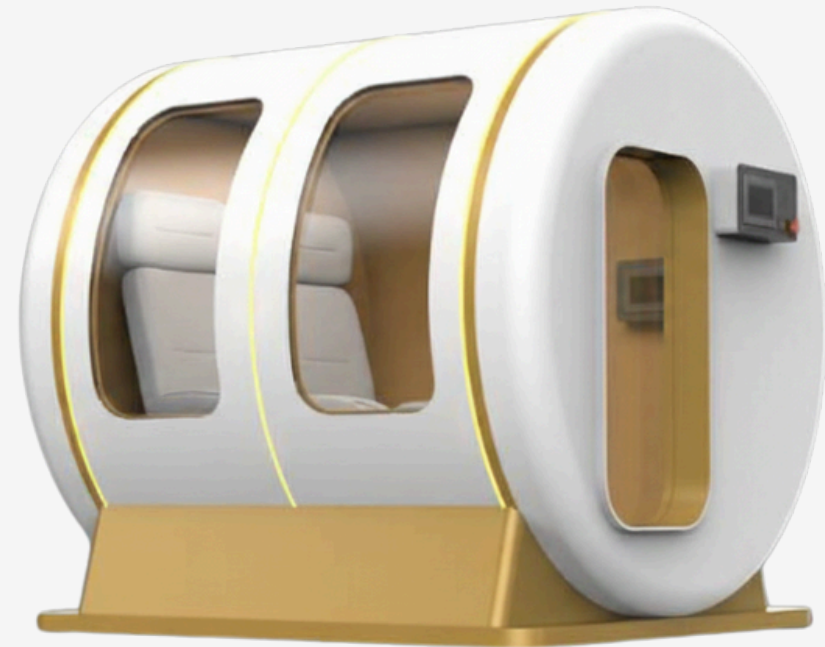
High Efficacy - Up To 1.99ata

Glass Windows and Door to prevent  
claustrophobia

## Specifications

Oxygen Flow: 20L/min

Oxygen Concentration: Up To 96%



## Gold Class Standard - From Singapore

Designed and Assembled in Singapore. Adheres to strict safety standards in Singapore. Burst tested beyond its recommended pressure to ensure the highest safety.

AeroPure System with Dehumidifier and Automatic Condensation Drainage to prevent the buildup of mould and bacteria

High-Efficiency Particulate Air (HEPA) Filters with laboratory grade hoses to eliminate odour and reduce dust build-up.

## Comfort

Luxurious Leather Interior – Customisable Shades  
Aromatherapy Scents Capability  
Integrated Bluetooth Audio and Movie Capabilities  
Leather Sofa Recliner

## Safety

Emergency Safety Stop Buttons  
Emergency Relief Valves  
Dual Communication Device  
Safety Passcode To Administer Pressure > 1.5ata

## End-To-End Service

HBOT Protocols Advisory and HBOT Operational and Safety Training  
Regular Service and Maintenance inclusive of HEPA Air Filters replacement and Safety Tests

## Warranty

3 Years Warranty\*  
*\*warranty applies with yearly service subscription*

## Specifications

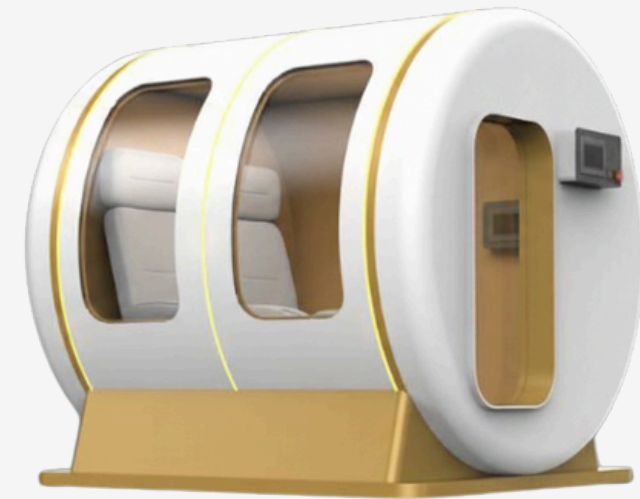
Dimensions:  
2011mm (L), 1850mm (W), 1964mm (H)

Assemble On-Site

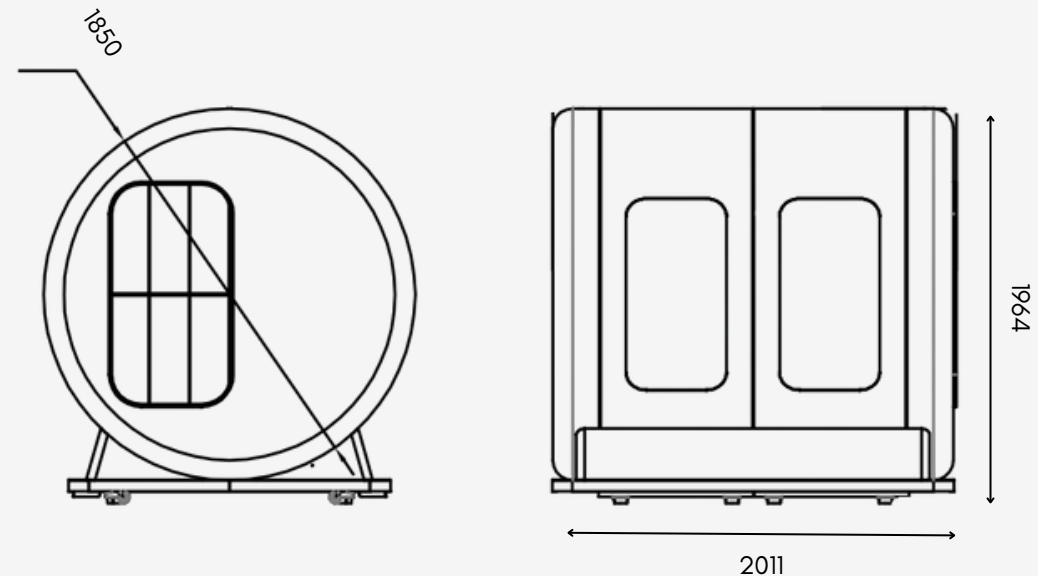
Voltage: 220 – 240V

Maximum Power: 7.5 KVA


**cocoon®**  
by **O<sub>2</sub>genes**




Where Wellness Meets Luxury



 @o2genes

 [www.o2genes.com](http://www.o2genes.com)

 +65 8802 9507

 [jolene.ng@o2genes.com](mailto:jolene.ng@o2genes.com)

## 2 Pax Aura Cocoon®: 1.99 ATA Specifications

Main Cocoon® External Dimension	L2011mm x W1850mm x H1964mm
Maximum Atmospheric Pressure	1.99 ATA
Oxygen Supply Mechanism	Oxygen Delivery Headset/Mask/Nasal Cannula
Oxygen Supply Concentration	93%±3%
Power Voltage	AC220V-240V
Maximum Power (including Air Chiller & Apparatus Cabinet)	7.5KVA
Power Requirements	The cross-sectional area of the conductor for each power cable must be at least 2.5 mm <sup>2</sup> . The 2 main electrical lines to be at least 4mm <sup>2</sup> Air Conditioner will be connected to a 13A wall socket Main equipment will be connected to a 20A isolator switch.
Apparatus Cabinet Dimension and Weight	L1000mm×W700mm×H1540mm
Air Chiller Dimension and Weight	L413mm×W400mm×H871mm
Gross Weight (Main Cocoon®)	1000KG Approx
Maximum Capacity	2 Pax
Equipment To Wall Space Required	At least 25cm from wall